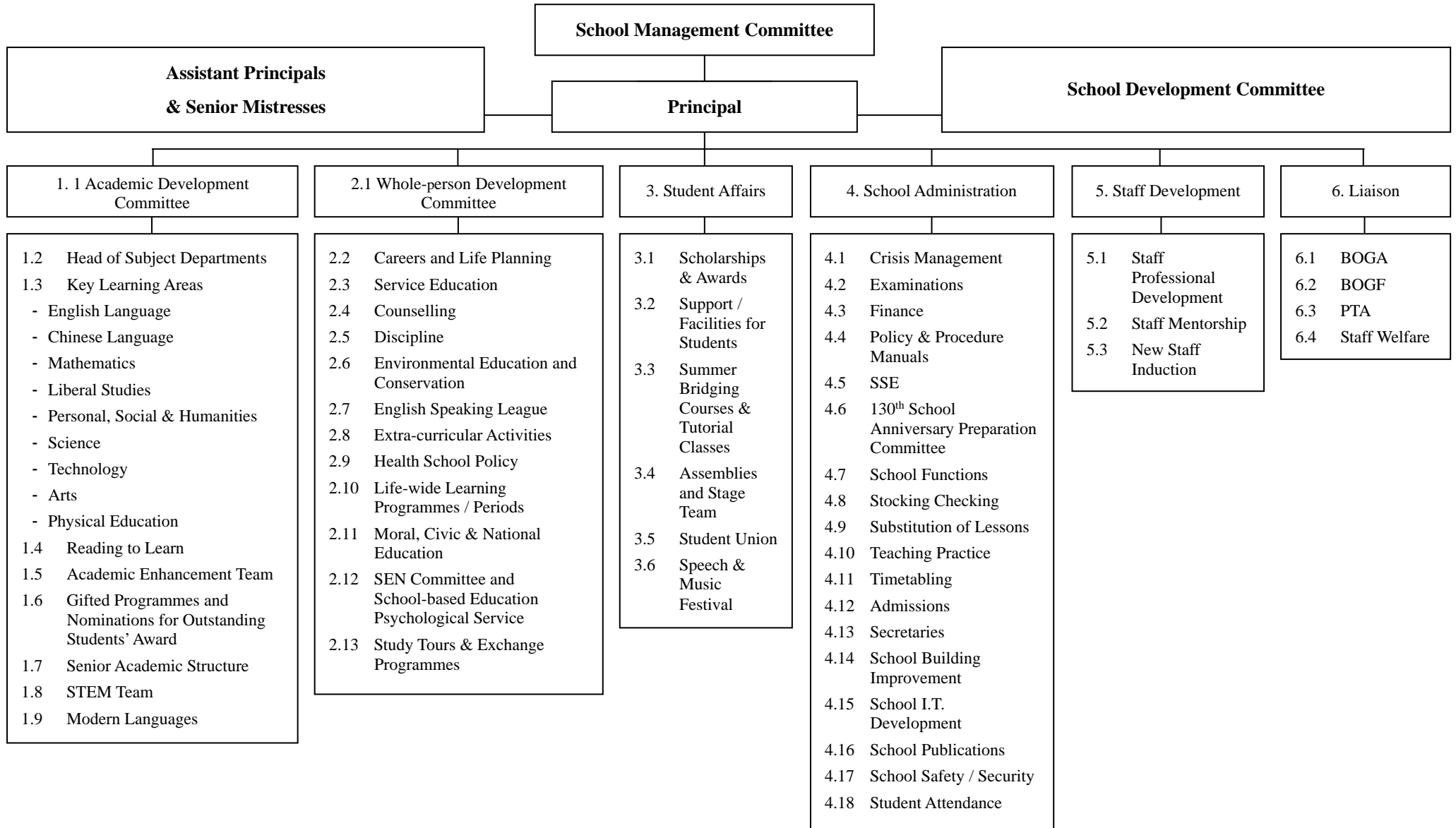




School Organization Chart



HO Shin-yee
Assistant Principal
Administrative Duties

(I) Whole-person Development – Overall i/c

- A. Service Education
- B. Counselling
- C. Discipline
- D. Environmental Education and Conservation
- E. English Speaking League
- F. Extra-curricular Activities
- G. Health School Policy
- H. Life-wide Learning Programmes / Periods
- I. Moral, Civic & National Education
- J. SEN Committee
- K. Study Tours & Exchange Programmes

(II) Student Affairs

- A. Assemblies and Stage Team
- B. Student Union
- C. Speech & Music Festival

(III) School Administration

- A. Admissions
- B. Secretaries
- C. School Building Improvement
- D. School Functions
- E. 130th School Anniversary Preparation Committee
- F. School I.T. Development
- G. School Publications
- H. School Safety/Security Committee
- I. Student Attendance
- J. Staff Recruitment

(IV) Liaison – Overall i/c

- A. B.O.G.A.
- B. B.O.G.F.
- C. PTA
- D. Staff Welfare
- E. School Office

CHUI Eileen
Assistant Principal
Administrative Duties

(I) Academic Development – Overall i/c

- A. Key Learning Areas
 - English Language
 - Chinese Language
 - Mathematics
 - Liberal Studies
 - Personal, Social & Humanities
 - Science
 - Technology
 - Arts
 - Physical Education
- B. Reading to Learn
- C. Academic Enhancement Team
- D. Careers and Life Planning
- E. Gifted Programmes and Nominations for Outstanding Students' Award
- F. Senior Academic Structure
- G. STEM Team
- H. Modern Languages

(III) Student Affairs

- A. Scholarships & Awards
- B. Support / Facilities for Students
- C. Summer Tutorial Classes

(IV) School Administration

- A. Examinations
- B. Finance
- C. Policy & Procedure Manuals
- D. SSE & ESR
- E. School Functions
- F. Sister School Programmes (Mainland)
- G. Stocking Checking
- H. Substitution of Lessons
- I. Teaching Practice
- J. Timetabling
- K. Teaching Assistants

(V) Staff Development

- A. Staff Professional Development
- B. Staff Mentorship
- C. New Staff Induction